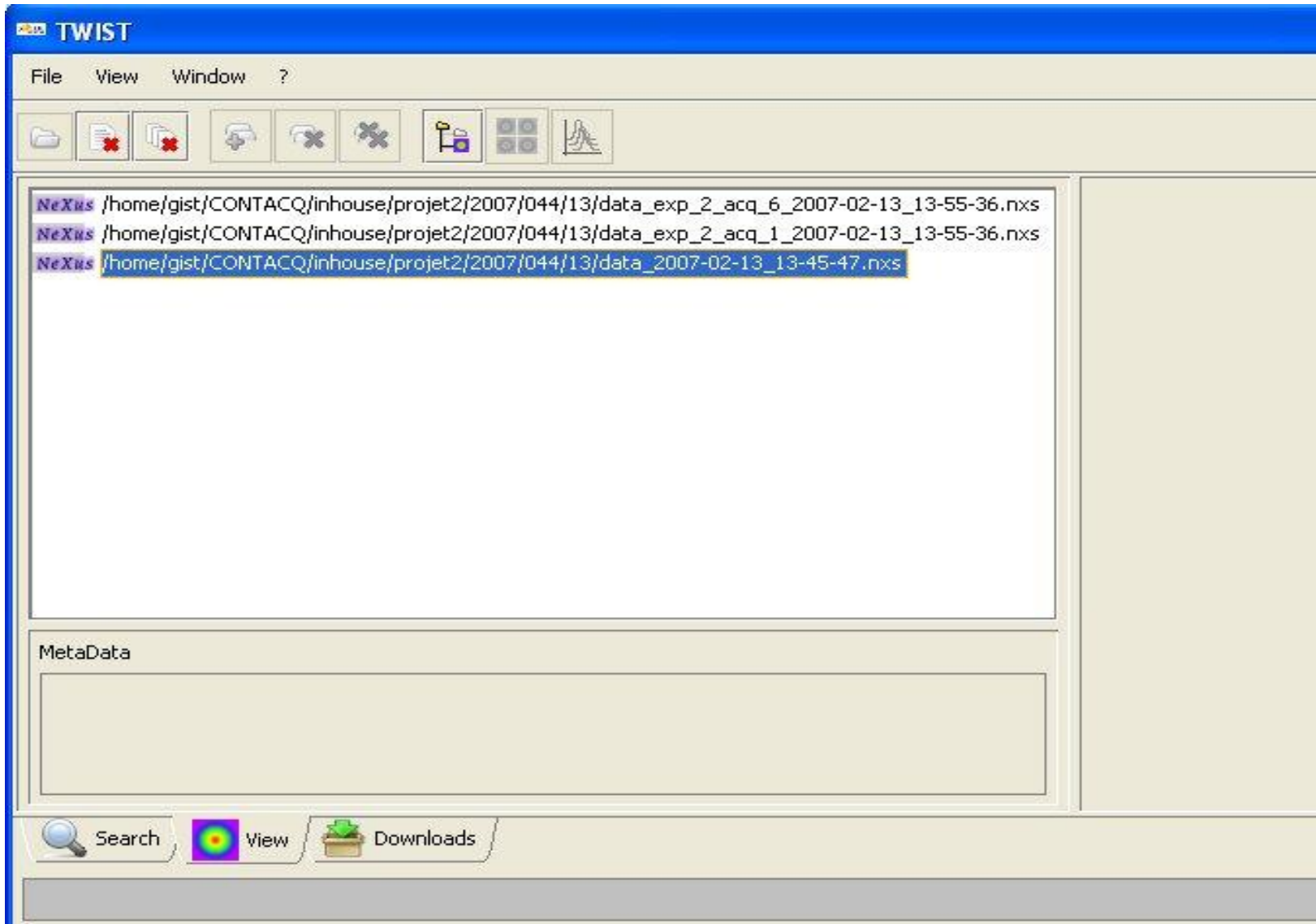


# DataBrowser

## Collaboration ANSTO/SOLEIL

Katy Saintin  
May 2014



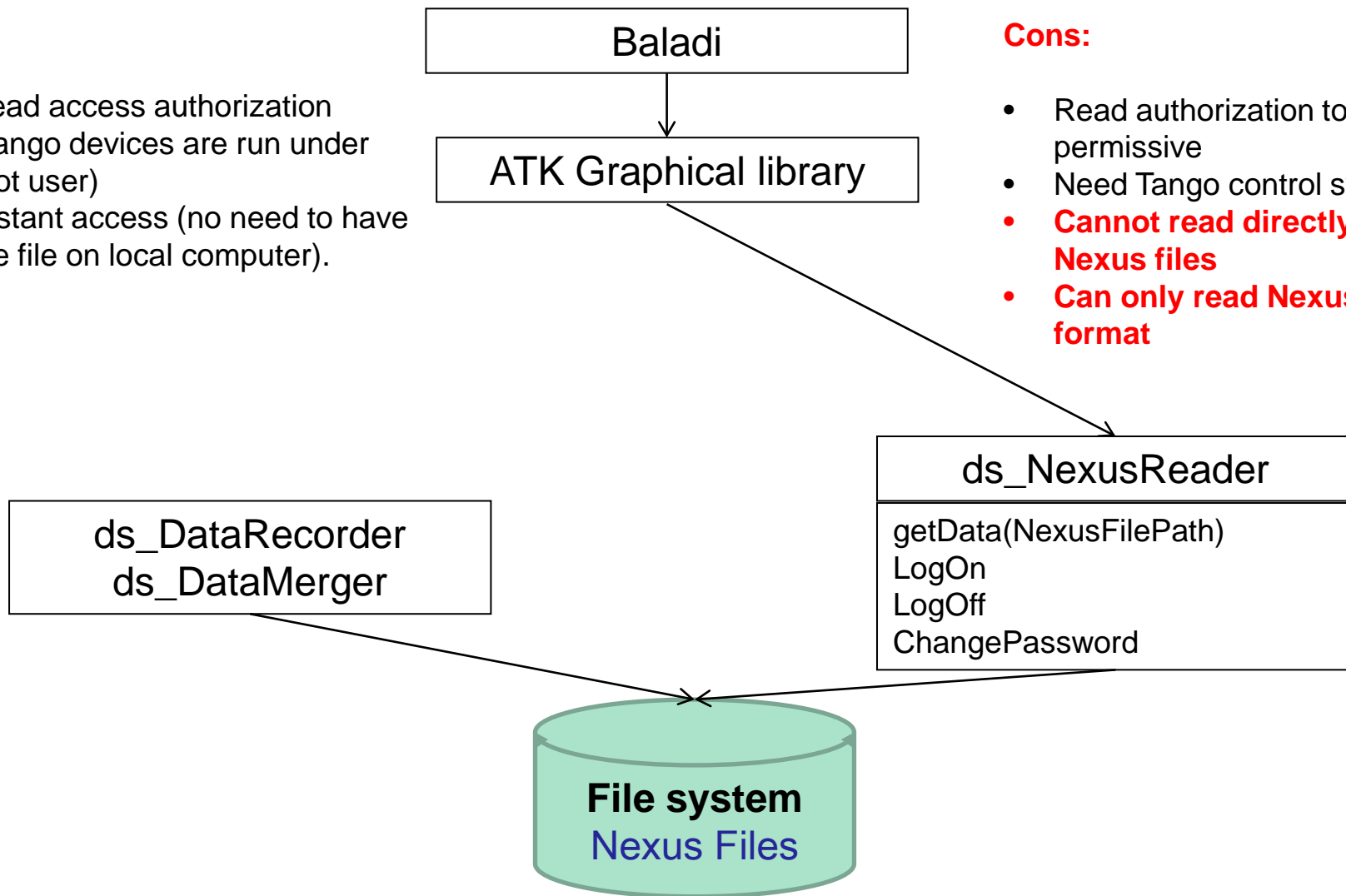


**Pro:**

- Read access authorization (Tango devices are run under root user)
- Distant access (no need to have the file on local computer).

**Cons:**

- Read authorization too permissive
- Need Tango control system
- **Cannot read directly a Nexus files**
- **Can only read Nexus format**



**1 - Datasource tree**

Open Close

- NEXUS
  - file:/D:/DataBrowser/datafiles/KatyScanImage.nxs
    - a
      - CRISTAL
      - User
      - comment\_conditions
      - experimental\_frame
      - scan\_data
        - actuator\_1\_1
        - data\_01
        - time\_1
        - trajectory\_1\_1
      - definition
      - duration
      - end\_time
      - experiment\_identifier
      - run\_number
      - start\_time
      - title

- TANGO
- tango/tangotes/1
- D:\tmp\Configurations\attributes.txt

**2 - Data items viewer**

SCALAR SPECTRUM IMAGE

CHART TEXT

Freeze Values Clear Freezes

**3 - Display manager**

Item	Axis
KatyScanImage.nxs - /a/scan_d...	IMAGE
KatyScanImage.nxs - /a/scan_d...	Y1
tango/tangotes/1/float_spectrum	Y1

**4 - Item informations**

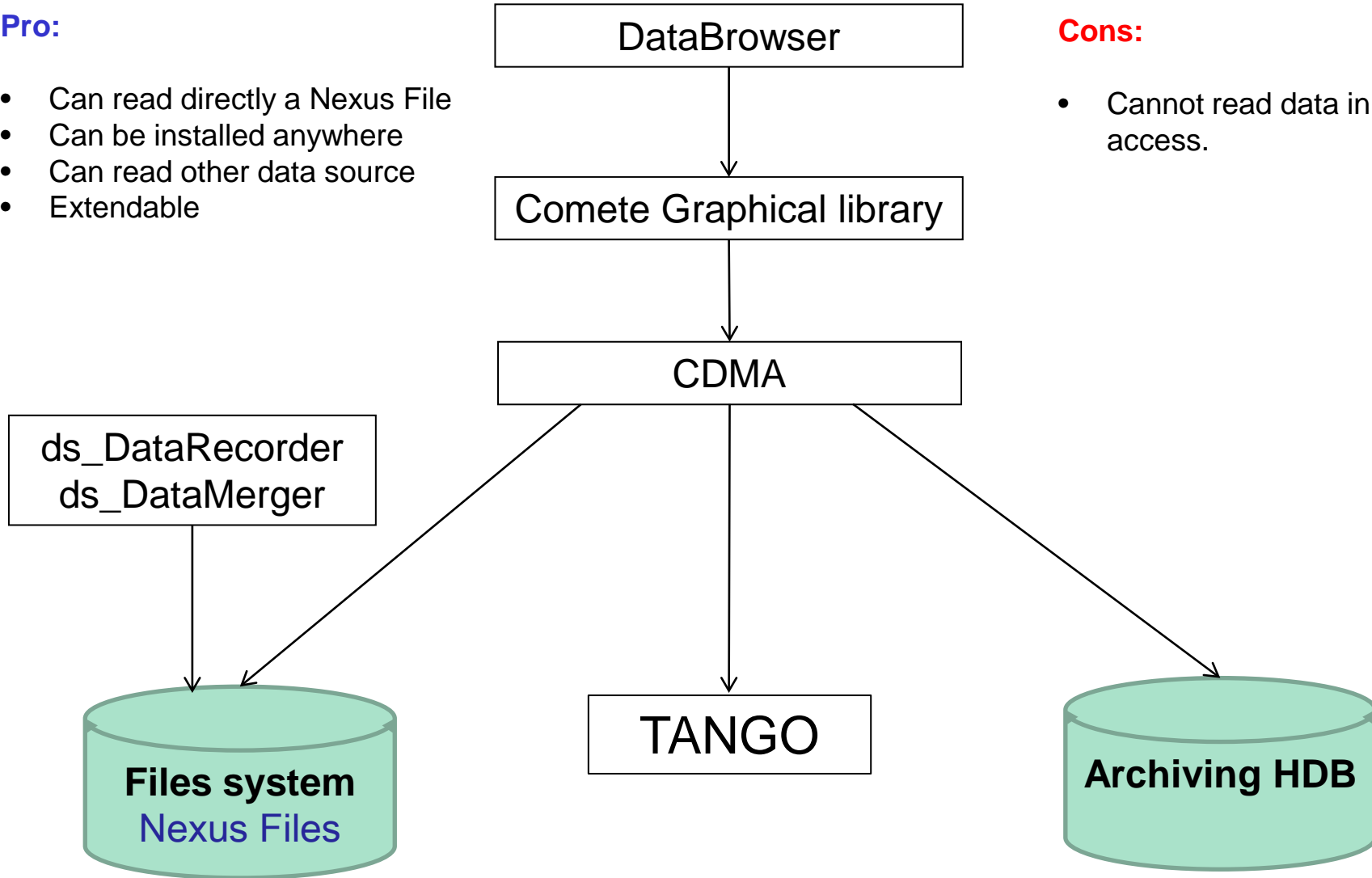
Property	Value
Description	A float spectrum attribute
Format	NUMERICAL
Label	float_spectrum
Max alarm	Not specified
Max value	Not specified
Min alarm	Not specified
Min value	Not specified
NumericalFormat	%6.2f
Rank	1
Shape	[4096]
Type	SPECTRUM
Unit	No unit

**Pro:**

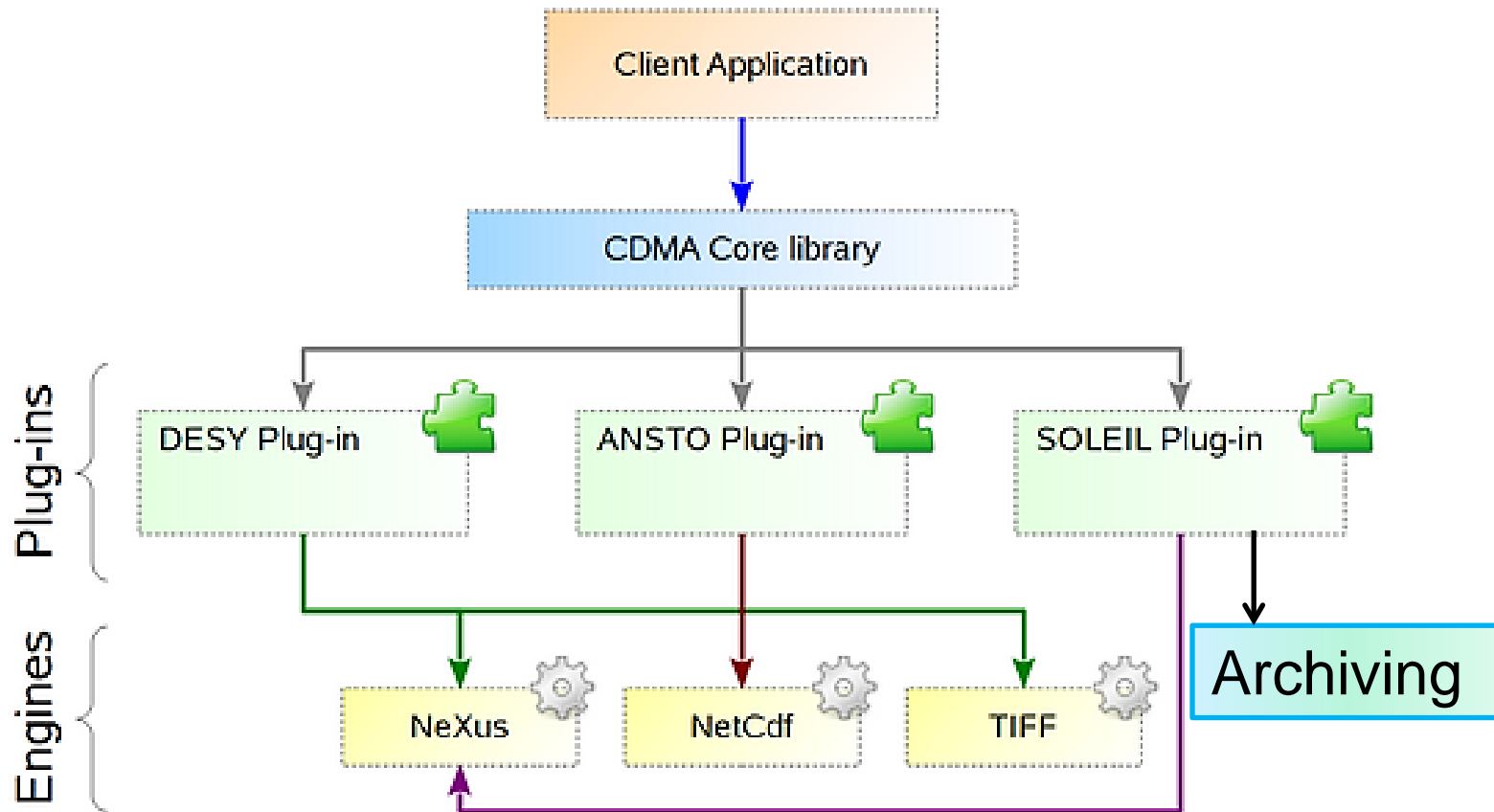
- Can read directly a Nexus File
- Can be installed anywhere
- Can read other data source
- Extendable

**Cons:**

- Cannot read data in distant access.



- A plug-in system that allows support of various data file formats and sources type :
  - HDF5 plug-in (ANSTO),
  - Nexus plugin-in (SOLEIL),
  - EDF plugin-in (ESRF),
  - Mambo plugin-in (SOLEIL),
  - TANGO plugin-in
- An abstract interface for navigation through data sets
  - Concrete classes are provided by data source plug-ins
- CDMA API introduces the notion of **dictionary**
  - A set of associations between *keywords* and *data paths* for a specific data structure.

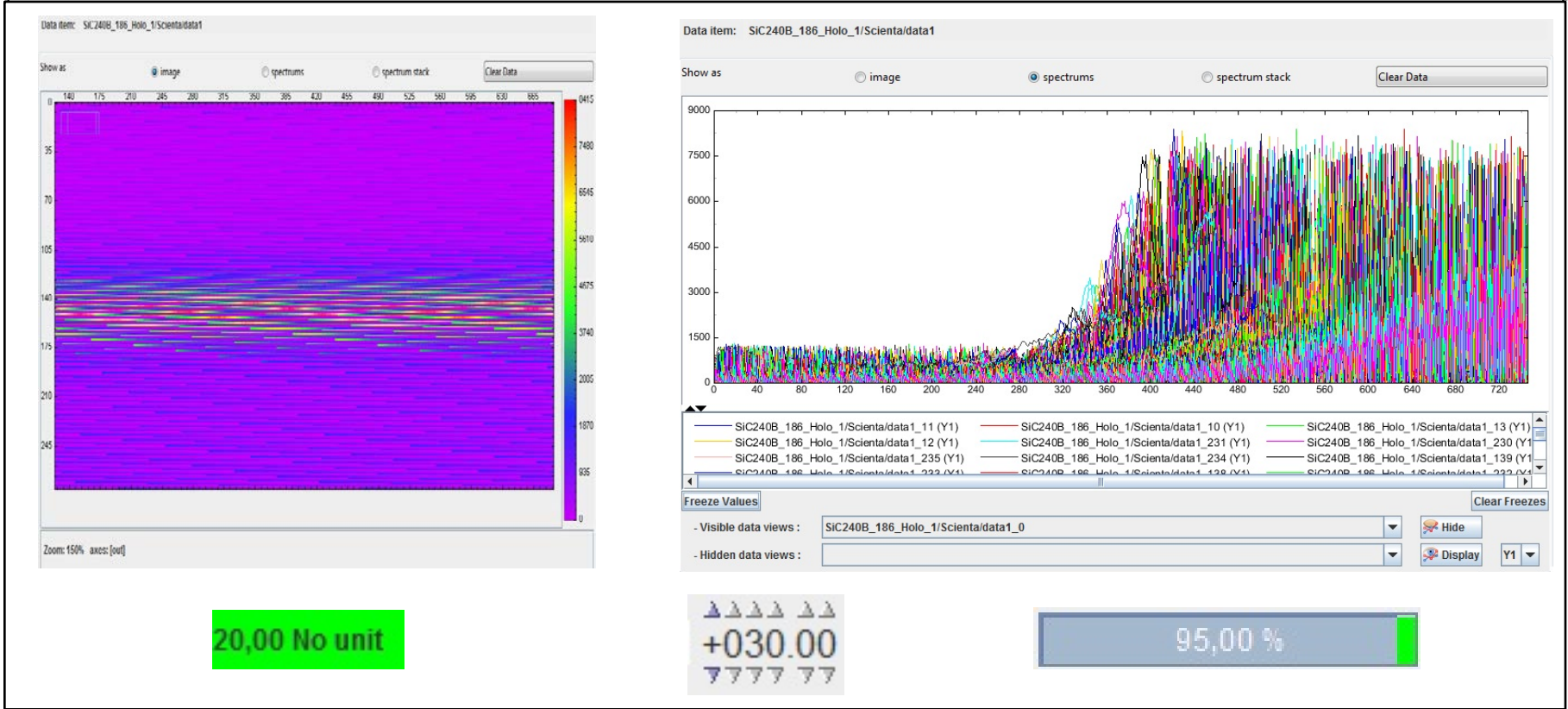




- A java graphical widget library, that can be connected to any data source through the DataConnectionManagement classe :
  - CometeSwing (SOLEIL),
  - CometeSWT (ANSTO),

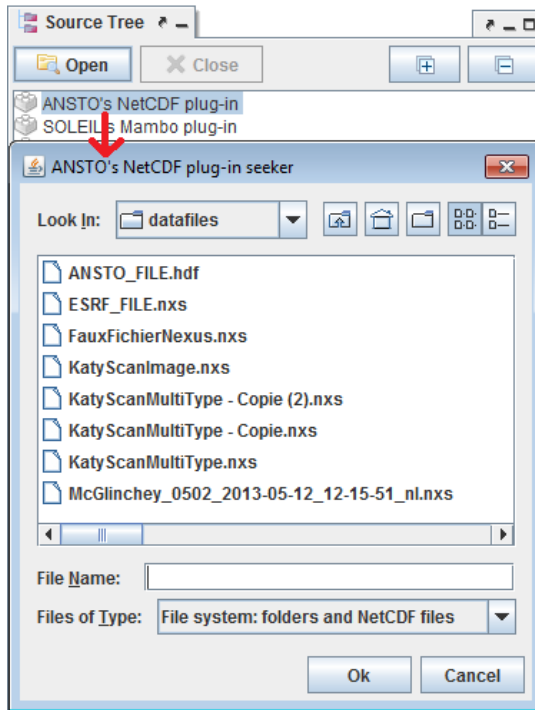


# CometeSwing

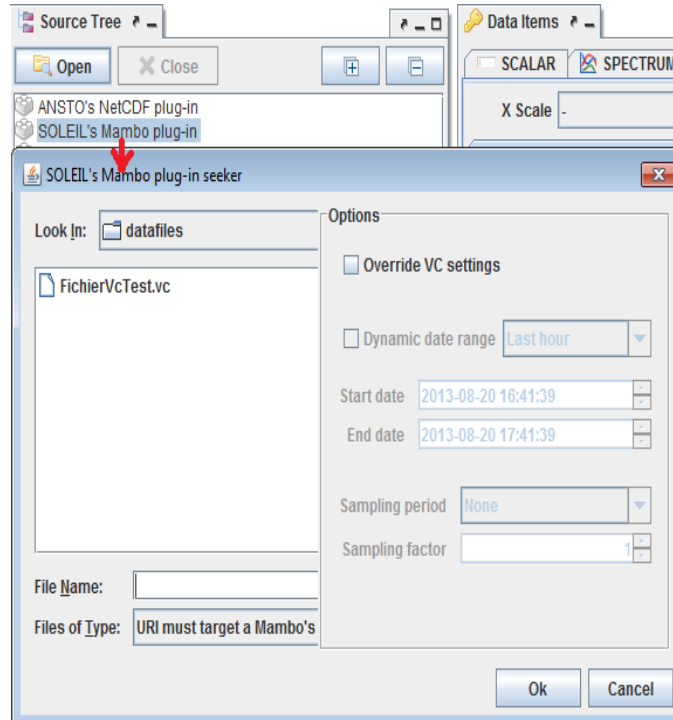


Data Connection Management

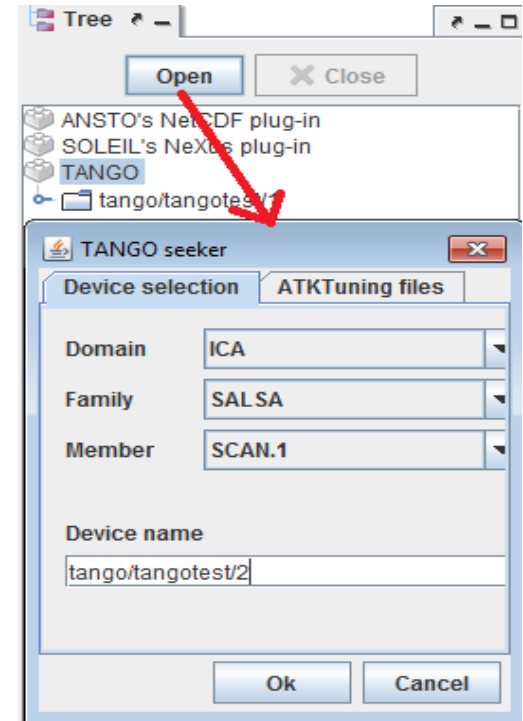
CDMA



Open a Nexus or HDF file



Open a Mambo VC file



Open a Tango source

