

ELI-ALPS Status

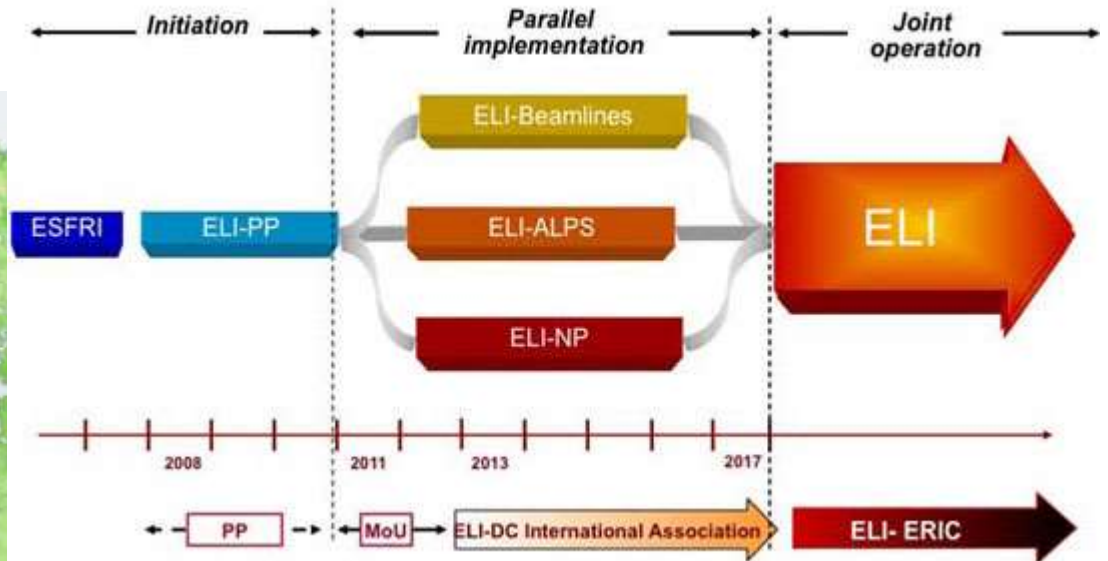
Lajos FÜLÖP, Sándor BROCKHAUSER



TANGO Meeting, Grenoble, FRANCE
May 19-20, 2014

Extreme Light Infrastructure (ELI) Implementation of ELI-ALPS, Phase 1

GOP-1.1.1-12/B-2012-0001



Extreme Light Infrastructure Attosecond Light Pulse Source (ELI-ALPS)

Implementation of ELI-ALPS, Phase 1
GOP-1.1.1-12/B-2012-0001



ELI-ALPS

Implementation of ELI-ALPS, Phase 1
GOP-1.1.1-12/B-2012-0001



ELI-ALPS

Implementation of ELI-ALPS, Phase 1
GOP-1.1.1-12/B-2012-0001

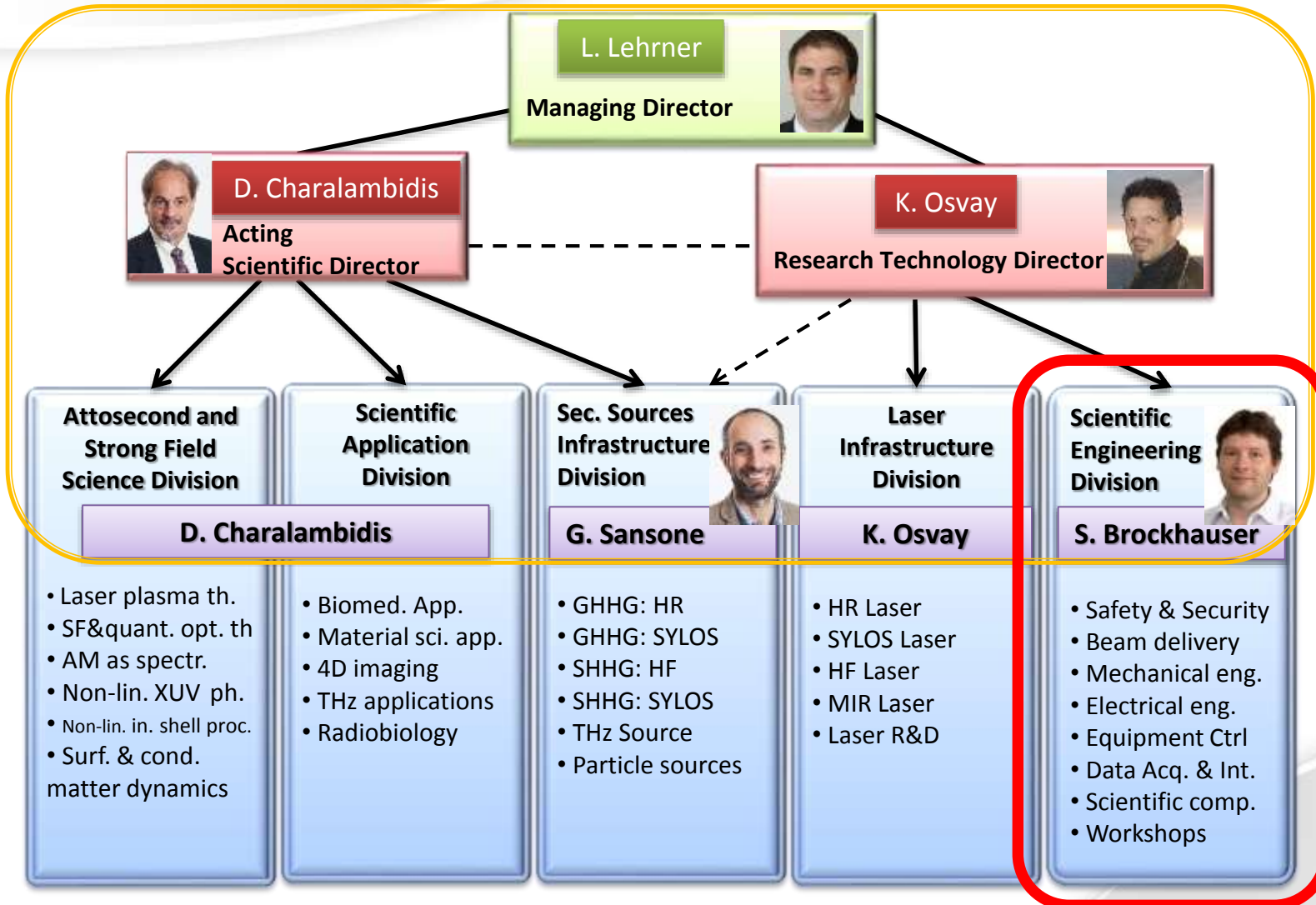


2014.05.09. 14:45.

Scientific Management

Implementation of ELI-ALPS, Phase 1
 GOP-1.1.1-12/B-2012-0001

Scientific Board



Scientific Engineering Division

Head – Sandor Brockhauser

Research Fellow – Veronika Hanyec

- Safety & Security Imre Hajnal, Tamara Kecskes,
Karoly Bodor, Peter Zagyvai
- Beam delivery Arpad Mohacsi, Byungnam Ahn
- Mechanical eng. Zoltan Toth, *Emanuel Martens, Csaba Poth*
- Electrical eng. Szabolcs Szallasi, Miklos Koncz
- Equipment control Imre Kiss
- Data acq. & Int. **Lajos Fulop**, Chris Turner, *Peter Acs*
- Scientific computing Peter Szasz, Viktor Voros, Csaba Koncz,
Luca Volpe, Zsolt Lecz
- Workshops



Thank you for your attention!