

Canone: a PHP interface to Tango

Main topics:

Security

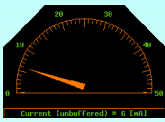
Tango to PHP bridge

Graphical elements (widgets)

Presentation pages (panels)

Configuration pages

SOAP server



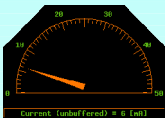
Security

Decoupling: web and Tango must be as separate as possible

Buffered readings: all readings are buffered in an embedded database (SQLite) with security limitations.

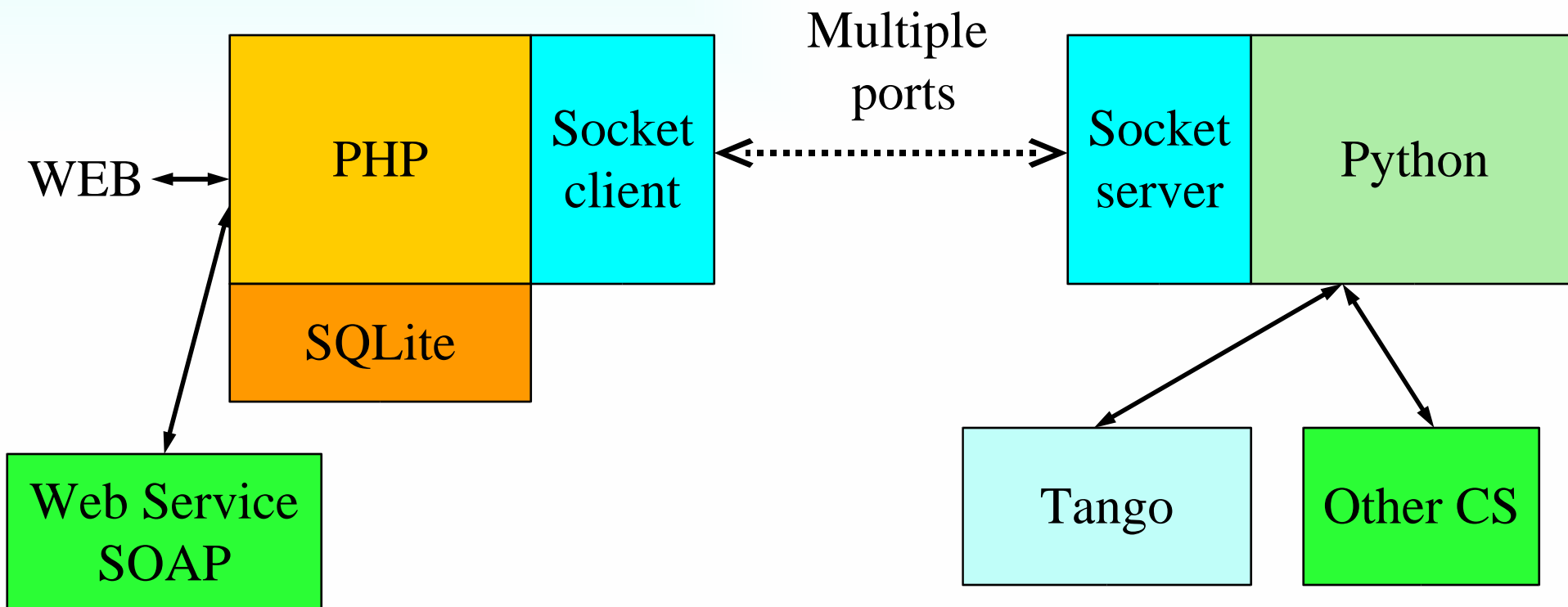
Different host: Tango core shouldn't be affected by an overload of the web interface

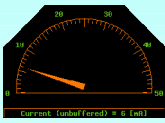
Limited writings: writings will be fully supported from release 2.0



TCP/IP socket

TCP/IP socket on multiple ports (multithreaded process)





Widgets: a set of graphical elements

set of general-purpose widgets

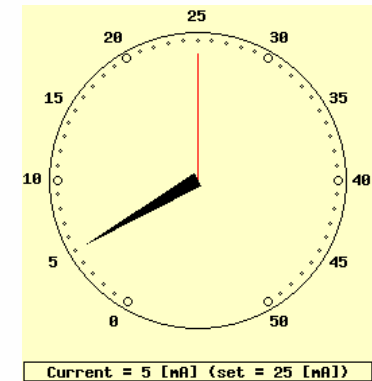
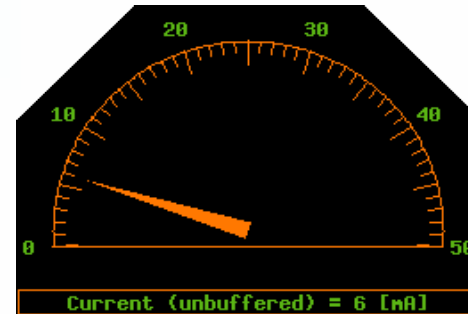
http://www.elettra.trieste.it/~tango/Canone/widgets_example.html

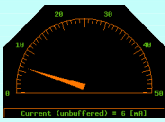
A widget can display:

Attribute: fully supported

Command: partially supported for security reasons

Property: not yet supported, missing `get_device_property_list()`





Configuration

device browser
widget
parameters

Automated panel
generation from
device

Canone - Mozilla Firefox

File Edit View Go Bookmarks Tools Help

Canone E-Giga

panel configuration: [view panel](#)

open all | close all

DEVICES

- ArchiveTest
- archiving
- coccobill
- dserver
- ecinja1
 - adios
 - fug
 - ip480
 - pdelay
 - tip600
 - 0
 - 1
 - 2
 - tip700
 - tip866
- jpgvideo
- linactest
- MIO
- mio
- mod8
- sr
- sys
- tangotest
- test

submit

Panel: Injection

Device: ecinja1/tip600/1

Attribute: Voltage

Widget: analog

50

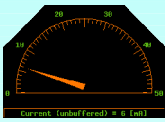
40 60 70 80 90 100

30 20 10 0

Voltage

test save

minimum	<input type="text" value="0"/>	?
maximum	<input type="text" value="100"/>	?
size of analog circle	<input type="text" value="250"/>	?
outer margin	<input type="text" value="20"/>	?
external margin	<input type="text" value="12"/>	?
internal margin	<input type="text" value="6"/>	?
ticks and numbers	<input type="text" value="[1,5,10]"/>	?
nodata degrees	<input type="text" value="30"/>	?
cut nodata	<input type="text" value="True"/>	?
no first	<input type="text" value="False"/>	?
no first	<input type="text" value="False"/>	?
check metod	<input type="text"/>	?
file name	<input type="text"/>	?
tick style	<input type="text" value="linear"/>	?
hand style	<input type="text" value="large"/>	?
2nd hand style	<input type="text" value="thin"/>	?



Canone



Canone - Mozilla Firefox


File Edit View Go Bookmarks Tools Help

ie/canone.php

panel: new HTML modify linactest/Premag/2 open

linactest/Premag/2

StateFlags	
ON/OFF	NOK
Precond	NOK
Remote/Local	OK
Stat	NOK
Switching	NOK



Voltage

Current

State