



	Experiment title: GISAXS study on the formation of bubbles induced by He implantation in Si and 4H-SiC	Experiment number: 02-01-653
Beamline: BM02	Date of experiment: from: 25/02/2005 to: 28/02/2005	Date of report:
Shifts: 9	Local contact(s): J.P. Simon	<i>Received at ESRF:</i>

Names and affiliations of applicants (* indicates experimentalists):

D. Babonneau*, J.F. Barbot, M.F. Beaufort, M.L. David, A. Declémy, D. Lantiat*,
S. Leclerc*, E. Oliviero, S. Peripolli*

LMP, UMR 6630 CNRS, Poitiers, France

V. Charmard, J.P. Simon*

LTPCM, UMR 5614 CNRS, Grenoble, France

Report:

The aim of this project was to study the microstructure of nanocavities (size, shape, arrangement, depth distribution) formed after implantation in semiconductors. Grazing incidence small-angle x-ray scattering (GISAXS) experiments have been performed on the D2AM beamline at 8950 eV using a 2D CCD detector fixed in front of the direct beam. The beamsize was $0.5 \times 0.1 \text{ mm}^2$ and the angle of incidence α_i was varied from 0.3° to 0.5° in order to characterize the depth profile of the cavities from the near surface to deeply buried regions up to $1 \mu\text{m}$. The influence of the implantation parameters on the formation of the nanocavities has been studied through the analysis of 3 types of samples:

- Si(001) implanted with He ions (50 keV, $5 \times 10^{16} \text{ He}^+ \cdot \text{cm}^{-2}$) at different temperatures (200-600 °C) subjected to further annealing at 400, 600, and 800 °C.

- Si(001) implanted with Ne ions (50 keV) at different fluences ($0.1\text{-}5 \times 10^{16} \text{ cm}^{-2}$) and different temperatures (250-800 °C)

- SiC implanted with He ions (50 keV, 300 °C) at different fluences ($3\text{-}10 \times 10^{16} \text{ cm}^{-2}$)

1) Helium implantation in silicon

As a typical example, figure 1(a) shows the GISAXS pattern of a Si(001) sample implanted with He ions at 200 °C and annealed at 600 °C for 1h. The angle of incidence was $\alpha_i = 0.4^\circ$ and the incident x-ray beam was parallel to the [110] direction ($\varphi = 0^\circ$). Furthermore, the length of the sample (30 mm) was adjusted in order to be able to perform absolute intensity measurements. An isotropic scattering signal without interference

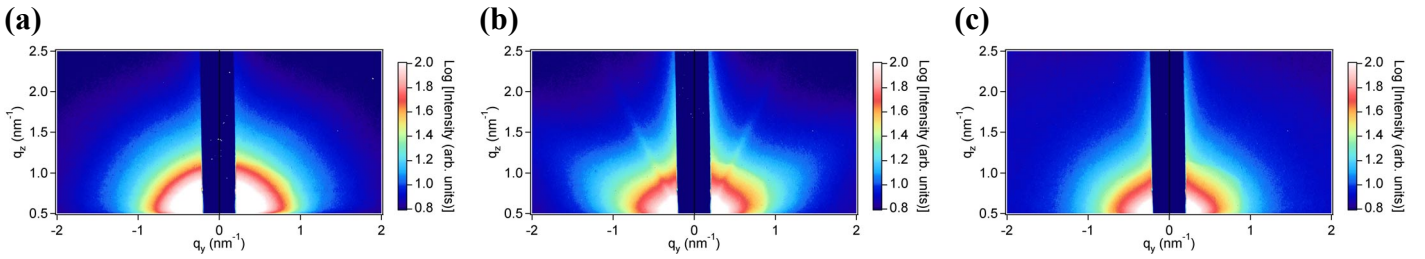


Figure 1: (a) GISAXS pattern of Si(001) implanted at 200 °C and annealed at 600 °C for 1h with $\alpha_i = 0.4^\circ$.
 (b) GISAXS pattern of Si(001) implanted at 600 °C with $\alpha_i = 0.4^\circ$ and $\varphi = 0^\circ$.
 (c) GISAXS pattern of Si(001) implanted at 600 °C with $\alpha_i = 0.4^\circ$ and $\varphi = 26.6^\circ$.

maximum is clearly seen in figure 1(a), indicating a random distribution of spherical cavities with average size of about 5 nm as deduced from a simple Guinier plot. The quantitative analysis of the experimental data is under progress and will permit to determine the evolution of the volume occupied by the cavities as a function of the annealing temperature.

In contrast, the GISAXS pattern of a Si(001) sample implanted with He ions at 600 °C [figure 1(b)] shows diffuse rods oriented at 54.7° from the surface normal (corresponding to $\langle 111 \rangle$ directions) and intense rods oriented at 25.2° , i.e. along $\langle 113 \rangle$ directions. To study the symmetry properties of the corresponding scattering objects, experiments at different azimuthal angles φ have been performed [see figure 1(c)]. The results reveal the existence of $\{111\}$ facets on the cavities and the presence of $\{113\}$ defects of ribbon-like type.

2) Neon implantation in silicon

It is worth noting that neither facetting of the cavities nor formation of $\{113\}$ defects was observed for neon implantations. On the other hand, no GISAXS signal was detected for fluences lower than $2 \times 10^{16} \text{ Ne}^+ \cdot \text{cm}^{-2}$. As examples, Figure 2(a) and 2(b) display the GISAXS patterns of Si(001) samples implanted at 250 °C with fluences of 2×10^{16} and $5 \times 10^{16} \text{ Ne}^+ \cdot \text{cm}^{-2}$ respectively. The quantitative analysis of the GISAXS data [figure 2(c)] shows that the average diameter of the spherical cavities increases with the temperature whereas the size distribution broadens as the fluence increases.

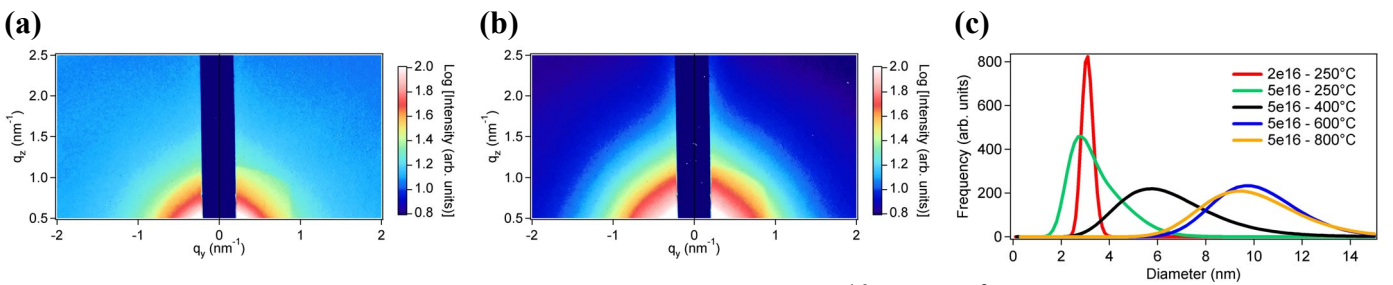


Figure 2: (a) GISAXS pattern of Si(001) implanted at $2 \times 10^{16} \text{ Ne}^+ \cdot \text{cm}^{-2}$ and 250 °C with $\alpha_i = 0.4^\circ$.
 (b) GISAXS pattern of Si(001) implanted at $5 \times 10^{16} \text{ Ne}^+ \cdot \text{cm}^{-2}$ and 250 °C with $\alpha_i = 0.4^\circ$.
 (c) Size distribution of the cavities as a function of the fluence and the temperature.

3) Helium implantation in silicon carbide

While no GISAXS signal was detected at $3 \times 10^{16} \text{ He}^+ \cdot \text{cm}^{-2}$, a diffuse ring characteristics of very small ($< 1.5 \text{ nm}$) cavities with a short-range ordering (intercavity distance around 3 nm) was observed at $1 \times 10^{17} \text{ He}^+ \cdot \text{cm}^{-2}$ in SiC. In conclusion, our experiments clearly show the capabilities of the GISAXS technique combined with the synchrotron brilliance for the study of buried defects induced by implantation in Si and SiC.